

BCM

Bottle Content Monitoring



IMAGE IT

DIR Technologies

BCM

About (DIR)

DIR Technologies utilizes sophisticated **infra-red detectors** and **thermal imaging** technology combined with **high throughput imaging & analysis** software, to provide innovative solutions for the **quality control and process monitoring** of pharmaceutical manufacturing and packaging processes



Advantages of DIR's technology

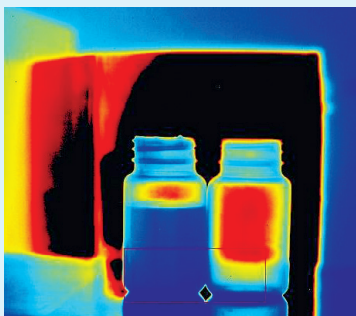
- Nondestructive, noninterfering
- In-line, Real-Time, 100% testing
- Very small foot-print, adaptable to any existing production line
- Can be customized to a wide variety of packaging processes
- No slowdown of production

Contact us for additional Information

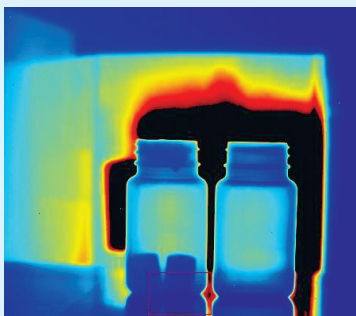
DIR Technologies, LTD., MATAM Towers 3, 6F
P.O. Box 15129 , Haifa 3190501, Israel
T +972 4 850 1190 | F +972 4 850 1192
www.dir-technologies.com



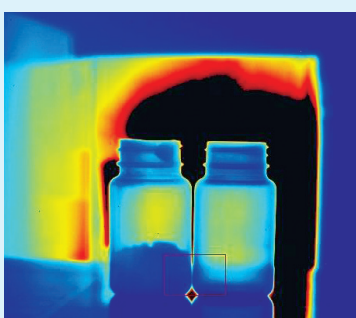
Standard HDPE bottles



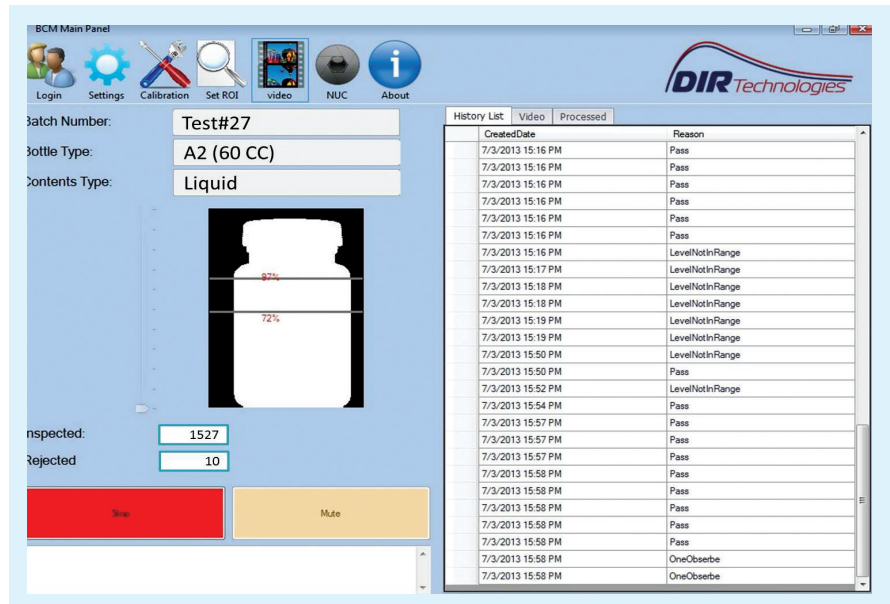
Liquid Fill level inspection



Desiccants count and inspection



Tablet content inspection



BCM System GUI

Characteristics

- The BCM system was specially designed for IN-LINE content monitoring of pharmaceutical bottles.
- The operation of the BCM is done through a touch screen that is very intuitive and straightforward.
- The system generates a report specifying the number of bottles rejected, the time and the reasons for the rejections.
- The BCM can be easily integrated into any existing line.
- The system can be optionally delivered with a high precision rejection system, that will remove only those bottles that are out of specification.
- All external parts of the system are made of Stainless Steel or Anodized Aluminum. The IR camera is sealed against dust and water splash (IP65 compliant).

BCM

The BCM
(Bottle Content Monitoring)
inspects the content of opaque
plastic containers in-line, **Without
Slowing Down The Production
Rate**. 100% bottles tested, timely,
Accurately, without interfering
with the process or the product.

The BCM makes use of DIR's advanced Thermal Imaging
system and propriety image process algorithms.

